



## CORPORATE SUITES

*By*

**Civitech**  
Spaces for Happiness

## ICONIC DESIGN

The grand facade of CIVITECH MALL, with wide open landscaped hang out spaces and a 33-floor modern tower is an architectural marvel such that the location is destined to be referred with its name.

## UNOBSTRUCTED VISIBILITY

Being right on the Noida-Greater Noida 130 m wide link road, the structure enjoys easy recognition and attention from miles away.

## SMOOTH AND SWIFT ACCESS

Located at the junction of major roads and in vicinity of the proposed metro station, this Mall is a sureshot winner.

With conveniently design for separate entry & exit points for Mall, High Street, Corporate Suites & Offices gives excellent access to all end users.



# ONE STOP DESTINATION FOR YOUR ALL NEEDS



# BLENDING YOUR IMAGINATION WITH REALITY



# BEYOND YOUR IMAGINATION

## ASPIRATIONAL

- Land allotted from Greater Noida Authority
- All approvals obtained
- Security gate as a part of grand entrance
- Landscape court and entrance foyer in midst of very large water bodies and water feature
- Double height welcoming court as a reflection of grandeur
- 5 star entrance with valet facility and help desk and travel assistant
- Coffee shop and Business Centre with Conference facilities
- World-cuisine restaurants and ultra premium lounges
- Exclusive entrance zones for lift lobbies
- Club zone with health facility like spa, gym, recreation centre, swimming pool & relaxing cabanas
- Fine dining and sky lounge
- Mobile boosters

## CONVENIENT

- Travel assistance for elderly and disabled
- Special assistance for old age and disabled people
- In-house Medical Room fitted with initial medical equipment for First Aid with a dedicated Nurse and Doctor on call
- In house hyper market salon, drycleaner and chemist
- In-house laundry
- F&B in room/dining facility
- Observatory deck/Viewing gallery at the sky floor
- Fitness centre/meditation/yoga on club zones
- Multilevel parking facility
- Landscape courts with sit out spaces
- Pedestrian paths
- Facilities like rest rooms with toilets for Domestic helps/drivers of the Residents
- Centralized intelligent BMS system
- Building Management and Security including emergency response

## THE BEST OF THE WORLD, AT A WORLD CLASS LOCATION

- Heating and cooling of individual apartment using VRV System with outdoor AC equipment and indoor units shall be concealed type with wall/ceiling air outlets
- Each bedroom and living room with independent climate control
- Fresh air to each apartment as per international standards
- Mobile phones to control smart home

5 tier security system

Voice Evacuation System and integrate Fire Safety System  
Fire telephones for two-way communication in each floor  
Integrated smart home security system for fire alarms and fire checks

Structure designed as per seismic zone IV

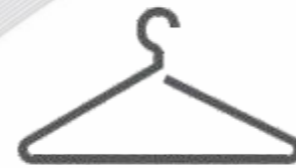
Intelligent touch control panels.  
Dual based generator for 100% backup including air conditioning systems.  
LED based energy conservation lighting  
Lighting customization as per themes  
IP based satellite antenna TV

# LIFE WITH BALANCE - PROJECT OFFERINGS



## 01 - Corporate Suites

An iconic insignia of luxury, a soulful and regal experience to those who step in.



## 02 - Anchor Store

Multi-level International fashion anchor stores



## 03 - Hyper Market

Larger plate Hyper Market for everyone's daily needs.



## 04 - Multiplex

One of the largest Multiplex with 6 screens.



## 05 - Retail Spaces

A fusion of High Street and Mall shops



## 06 - Entertainment Zone

Larger than life family Entertainment zone and kids play zone.



## 07 - Restaurant cum Bar

Impressive list of restaurant with epicurean cuisines.



## 08 - Office Space

Premium Office blocks with strata spaces designed to accommodate both single and multiple occupancy format providing co-working space as well.



## 09 - Food Court

Cafes and lounges with open air seating



## 10 - Multi-level Parking

Underground Multi-level parking to accommodate upto 1300 cars.

Spread across approx 4 Acres (15089 Sq. mtr.) the project is associated with India's finest consultants.

- Civitech Mall is a mixed land project with Retail, High Street, Offices & Premium Corporate Suites
- 3 side open Mall with panoramic views
- Easy to commute with 360 connectivity by Road & Metro
- National & International high-end brands
- 1300+ car parking space in 3 level parking zones.
- Ambitious location with High Profile gentry approx. 10 lakh residing in surrounding areas
- Designed on the pattern of environment friendly & awarded as 4 star GRIHA rated project with large open spaces & International Styled Landscaping designed by Singal Associates

# AN ADDRESS THAT HAS IT ALL

Located in Greater Noida (West)

3-side open plot near the Kisan Chowk roundabout, facing 130 m Noida & Greater Noida West Link Road.



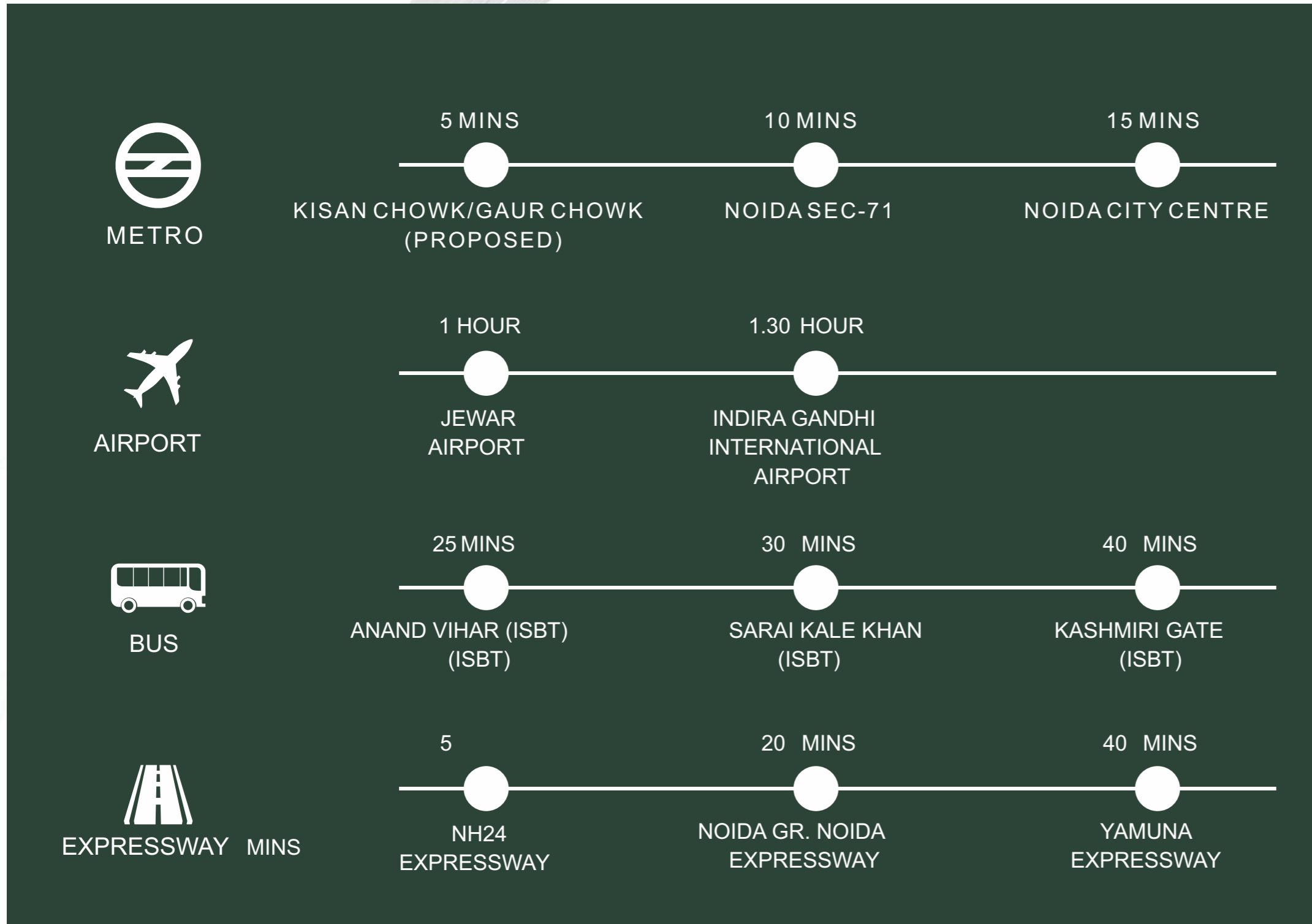
# CATCHMENT OF OVER 5 LAKH FAMILIES WITHIN 6 KM

## 🕒 5 MINUTES

- NH 24
- SECTOR-120, NOIDA
- WISDOM TREE SCHOOL
- RYAN INTERNATIONAL SCHOOL
- CROSSING REPUBLIC RESIDENTIAL DEVELOPMENT

## 🕒 5-10 MINUTES

- DPS, LOTUS VALLEY SCHOOL, GD GOENKA
- NOIDA-GR.NOIDA EXPRESSWAY
- FORTIS HOSPITAL
- SAI TEMPLE SECTOR 52
- SHIV NADAR UNIVERSITY
- MAX SUPER SPECIALTY HOSPITAL
- NOIDA CITY CENTER METRO STATION









# ELEVATING FROM THE FIRST SIGHT

## CORPORATE SUITES

Four small images showing interior views of corporate suites: a woman on a balcony, a woman in a lounge chair, a bedroom, and a living area. The images are arranged in a 2x2 grid. The top-left image shows a woman in a white robe sitting on a balcony, holding a glass of orange juice. The top-right image shows a woman in a black top sitting in a white lounge chair next to a black lamp. The bottom-left image shows a bedroom with a bed, a nightstand, and a framed picture on the wall. The bottom-right image shows a living area with a sofa, a coffee table, and a large window with curtains.

# ENTER A REFRESHING ADDRESS

SEPARATE ENTRY FOR CORPORATE SUITES & OFFICE FLOORS

The gleaming triple-height entrance lobby is a welcome sight for both employees and visitors, leading into a well-lit concourse that features ample seating amidst modern interior studded with natural tones and plants. A cosy café serves quick relishes for those waiting, besides serving as a great place for a casual chat over a bite. With separate high speed elevators for Offices & Corporate Suites & entry only with card gives you a sense of exclusivity.



A World Of Peaceful, Laid-back Living

# THE CLUB

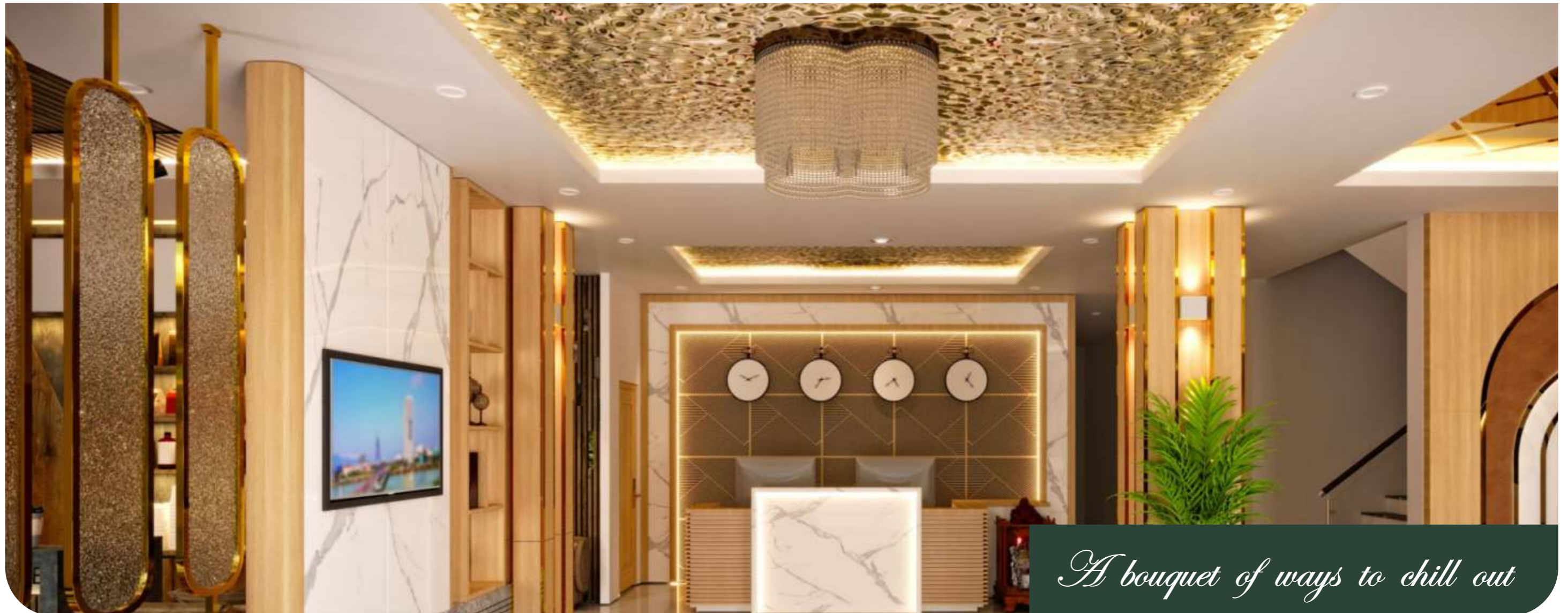
LOADED WITH ALL AMENITIES & LOCATED AT 10TH FLOOR WITH EXCLUSIVE ACCESS FOR CORPORATE SUITES & OFFICE ONLY

The Club has a luxurious decor and attentive staff for all your needs.

The Club has multi cuisine menu turn the joy of eating into a new art form. Add to that, the international pub for great conversations over some fine drinks from across the world.

For a work out or a spot of pampering, the club has be a state-of-the-art gym, a studio for personal training and a massage room. Pool tables for some great snooker shots. Indoor lounge for reading or relaxation. Dance/Yoga room for attaining moksha amidst stars. Steam, sauna and spa room for complete rejuvenation. Cigar rooms for responsible smoking.

Unwinding gets simpler than ever, with the leisure of taking your own sweet time. Step on to the deck by the poolside, hidden by a canopy of greens and enjoy fine-dining. There is a whole plethora of high ways to unwind. Outdoor terrace for enjoying fresh air, sunshine and viewing those desktop wallpapers for real.



*A bouquet of ways to chill out*

# ENJOY YOUR EXCLUSIVE WAY TO UNWIND

## HEALTHY MIND, SOUL & BODY

1. Library
2. Swimming Pool
3. Fully equipped Gym
4. Foosball Table
5. Snooker Table
6. Chesse Table
7. Cards Table
8. Table Tennis
9. Spa
10. Meditation Area

## SLIP INTO CONVENIENCE

1. Meeting Rooms
2. Conference Hall
3. Banquet Halls
4. Covered Car Parking
5. Welcome Lobby of Club

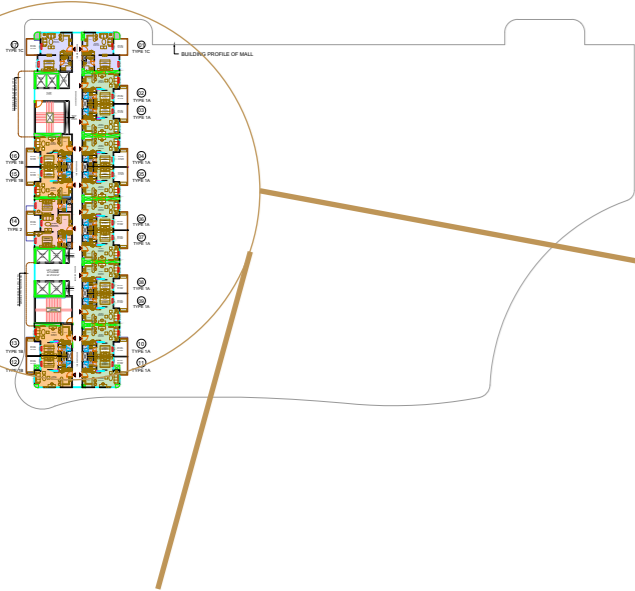
## DIVE INTO PURE INDULGENCE

1. Café
2. Bar
3. Restaurant



# CORPORATE SUITES - FLOOR PLAN

## 12th Floor onwards



LEGEND		
SYMBOL	DESCRIPTION	
	COPORATE SUITE OF 1+1	TYPE 1A
	COPORATE SUITE OF 1+1	TYPE 1B
	COPORATE SUITE OF 1+1	TYPE 1C
	COPORATE SUITE OF T1+2	TYPE 2



# CORPORATE SUITES - UNIT PLAN

12th to 33rd Floor

THE SUITES  
12TH-33RD FLOOR



## TYPE - 1A

SUPER AREA - 795 SQ.FT.

BUILT UP AREA - 497 SQ.FT.

CARPET AREA - 374 SQ.FT.

DECK AREA - 79 SQ.FT.

TYPE 1A

LOUNGE AREA

6835x2775

22'-6"X9'-0"

PANTRY

BREAKFAST TABLE

RESTROOM

2535X2125

8'-3"X7'-0"

ENSUITE

3400x2790

11'-2"X9'-3"

DECK

2285 WIDE

7'-6" WIDE

SERVICE  
SHAFT

# LIVING SPACES FLOW ELEGANTLY AND NATURALLY

A truly contemporary living spaces incorporates neutral palette and minimalist style that seeks to enhance residents' lifestyle. The high-ceiling glass windows optimize natural ventilation and light penetration to promote energy efficiency, while offering beautiful view .





# MASTER ENSUITE

## FOR MASTER COMFORTS

A luxurious and timeless master ensuite offers the remarkable comforts of the top-of-the-range finishes, home-like proportions and truly extraordinary views from an attached balcony that are an essential part of an upper-floor living.



QUALITY & ELEGANCE COUPLED TOGETHER  
WITH GREAT AMBIENCE & IMPECCABLE SERVICES

For those looking for an extra touch of exceptional luxury, the lounge attached to your living/ dining areas is the perfect place to entertain guests or simply to relax with the beautiful views from the comfort and privacy of your own home.



1. Designer VRV Air Conditioning
2. High ceiling windows for a well lit vibrant home
3. Imported marble in the living, dining & kitchen
4. Optimum size balconies overlooking the designer landscaping outdoors/ club.

5. Sleek finished bathrooms with premium fittings and fixtures
6. Spacious terrace with attached optimum size balcony
7. High-end fittings and fixtures
8. Dedicated Car Parking Space



**5 PINNACLES OF SUCCESS**



**CIVITECH GROUP**  
Built on values :

Civitech Developers is a well know trusted real estate company dedicated to realizing dreams and providing exceptional value.

Established in 1995, the Group has experience over the past twenty nine years in development & delivery of unique, innovative, high quality and modern real estate projects in Delhi NCR region.

With one the remarkable group housing in the region some of notable delivered projects includes Civitech Florencia, Civitech Sampriti, Civitech Stadia to name a few.

Civitech has experienced remarkable expansion, supported by three decades of visionary leadership from Mr. Subodh Goel, whose unwavering commitment has been to establish a new standard for excellence in construction. The Group is committed towards developing state-of-the-art real estate masterpieces.

<b>10</b> DELIVERED PROJECTS	<b>5500+</b> HAPPY FAMILIES	<b>29 YEARS</b> OF EXCELLENCE	<b>40 LAKH+</b> BUILD UP AREA DELIVERED
---------------------------------	--------------------------------	----------------------------------	--

**CIVITECH BUILDCON PRIVATE LIMITED**

SITE : C-1B, SECTOR - 16, GREATER NOIDA WEST, (UP) | [www.civitech.in](http://www.civitech.in) | RERA REG NO. : UPRERAPRJ364474 | [www.up-rera.in](http://www.up-rera.in)